



ADC - D1

# Workhuman iQ

## Building a Culture of Connection using Amazon Neptune

Andrew Keogh (he/him)

Director, Product Development Operations  
Workhuman

Kevin Phillips (he/him)

Specialist Solutions Architect, Amazon Neptune  
AWS

# Agenda

Workhuman

Workhuman iQ

Organizational Network Analysis

DynamoDB or not DynamoDB

Our path to Amazon Neptune

What's next?



**Eric Mosely**  
Founder & CEO

Founded  
**1999**

24 years of bringing  
humanity to the workplace

Employees  
**1,000+**

Here to help you build an  
engaged and thriving workforce



Cashflow positive for 15 years  
Highly profitable and growing for 10 years

Why leading organizations choose Workhuman:



**Global scale & capability**



**Pioneering product innovation**



**Guaranteed client success**



**Military-grade security**



**Thought leadership & expert guidance**

Trusted by the world's leading brands:



**7 of the top 10 biopharma orgs**



**4 of the top 10 consultancies**



**5 of the top 10 media companies**



**3 of the top 10 tech companies**

+ hundreds of healthcare, financial services, insurance, energy, and industrials companies around the world





workhuman\*cloud.



Social Recognition®



Celebrations®



Conversations®

### FEATURED CAPABILITIES

#### Analytics & Reporting

Advanced people and performance data

#### Global Redemption Platform

Robust e-commerce for gift cards, merchandise, & experiences

#### Peer-to-Peer

Socialize recognition and your values across the enterprise

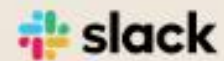
#### Bias Detection

A.I. and NLP sentiment analysis with real-time coaching

#### Generative AI

AI assistance to help compose impactful award messages

### POPULAR INTEGRATIONS



### THE DIFFERENCE MAKERS

Global Scale

Innovation

ROI

Guidance

Security

**“The recognition data shows where people are collaborating, where leaders are recognizing their teams, and where people maybe have an opportunity to recognize more. So, we can target our efforts and help those leaders be even better leaders and help them drive their teams to new heights.”**

**Michelle Hecht**

EVP, Strategic Communications, Citizens Bank

# iQ – our newest application

## 20+ years of relationship data

What are your people congratulating each other for?

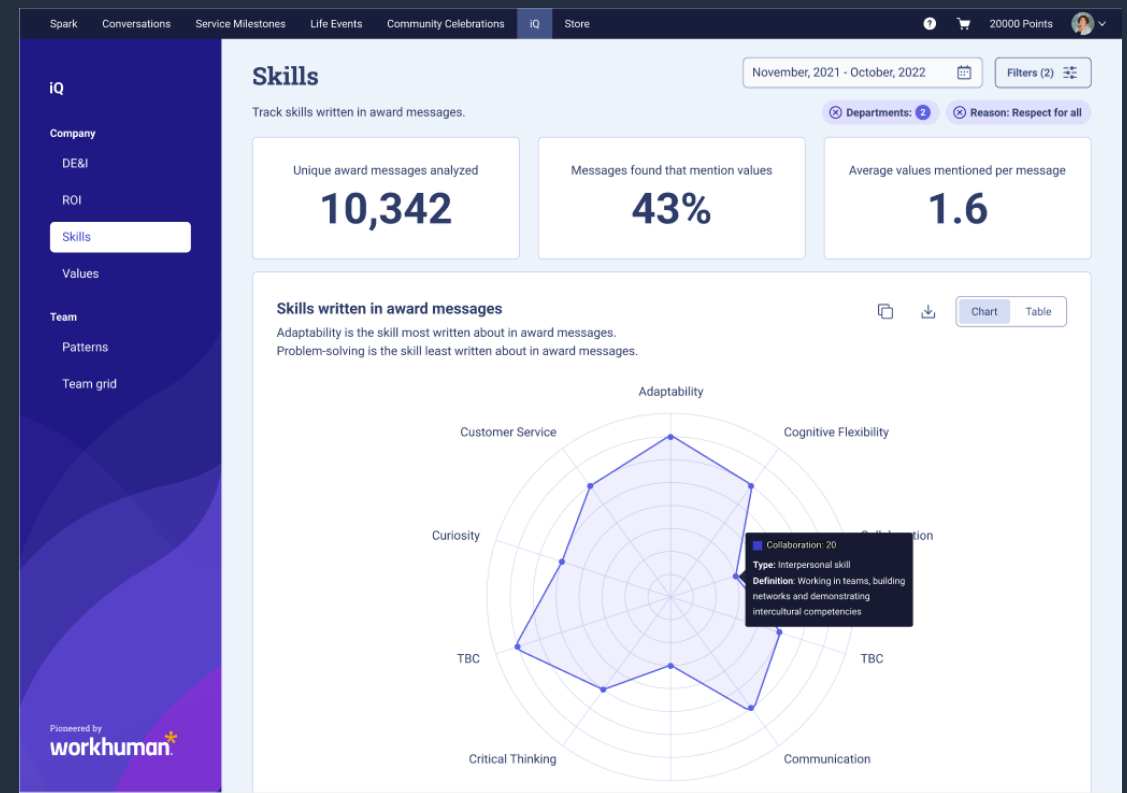
Do these map onto your organization's cultural values?

What human skills do people recognize in your organization?

What are the observable differentiating factors in high-performing teams?

How can you retain staff through turbulent times?

## ROI of Social Recognition



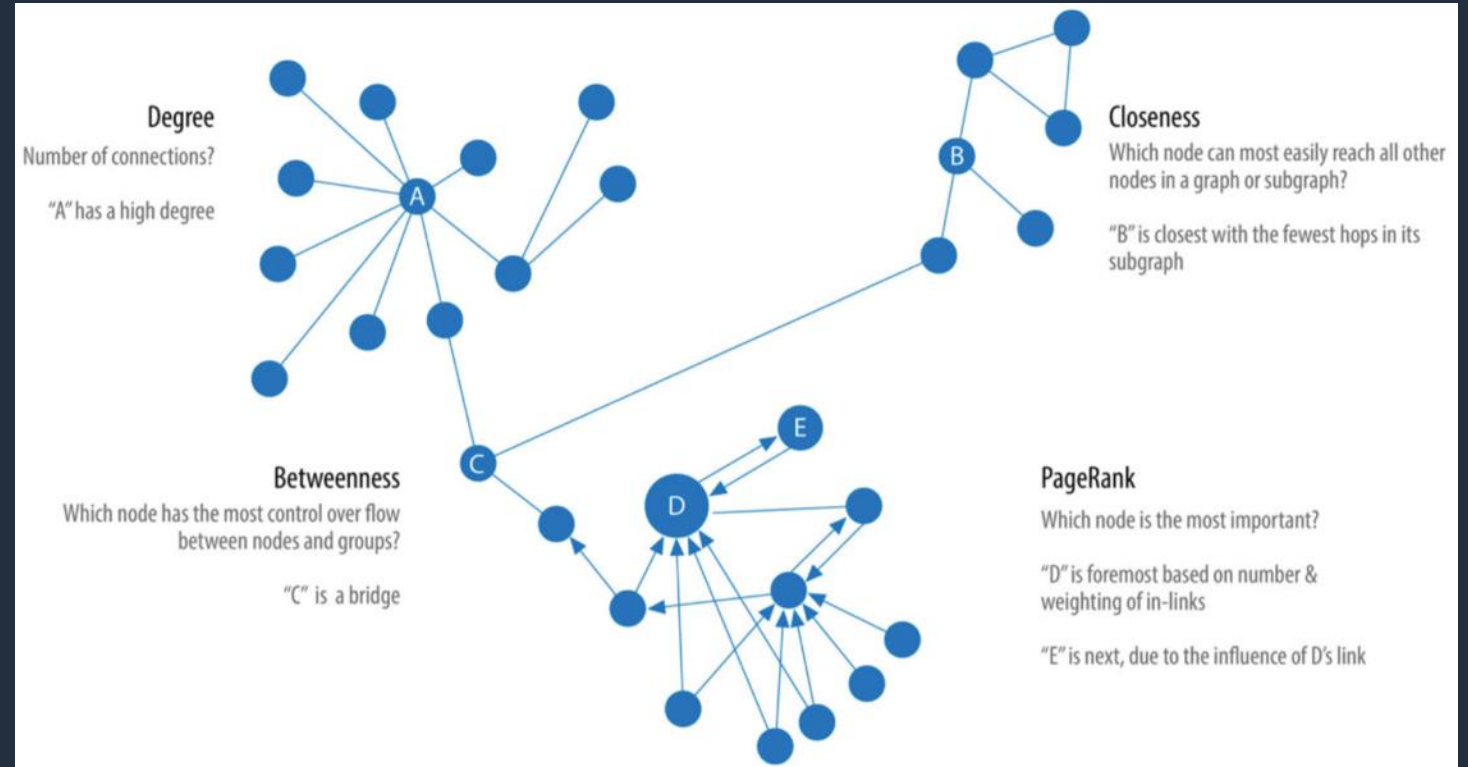
# Organizational Network Analysis

How does work get done in an organization?

Who are the greatest drivers of your culture?

Who acts as influencers across departments?

What does collaboration look like mapped against performance data?



Picture credit: O'Reilly Graph Algorithms Neo4j Edition

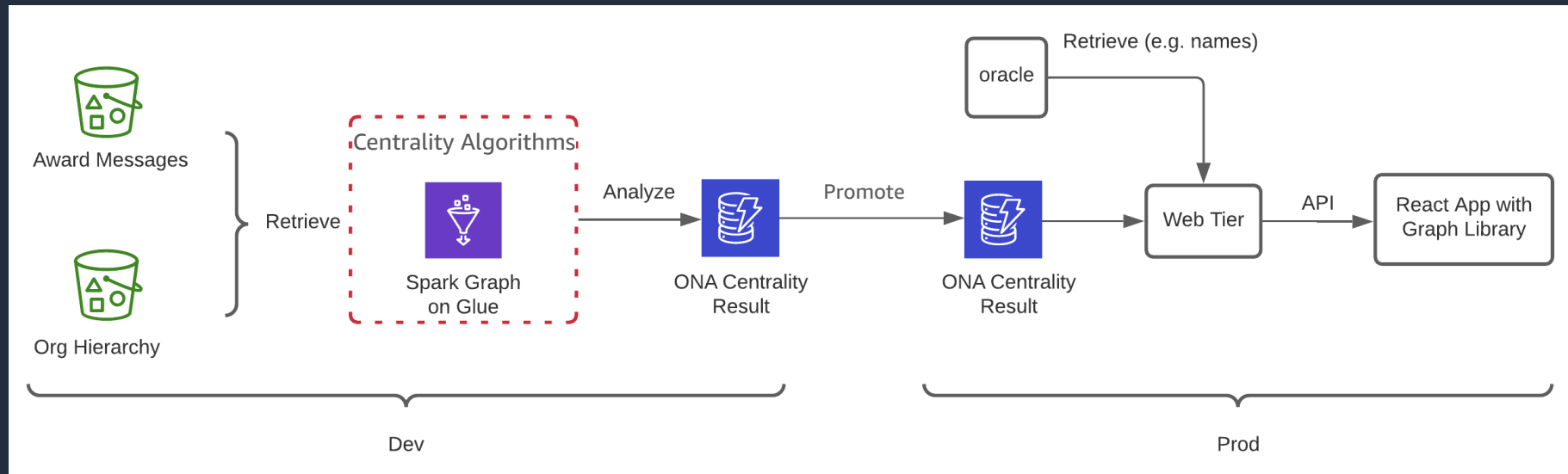
# NoSQL Solution

## Preprocess centrality algorithms

- Reduce computation time
- Increase front-end performance
- Maintain our technology footprint.

## Poor problem-solution fit

- Highly-connected data
- Complex data model
- High memory usage





# Graph Database

Algorithmic support

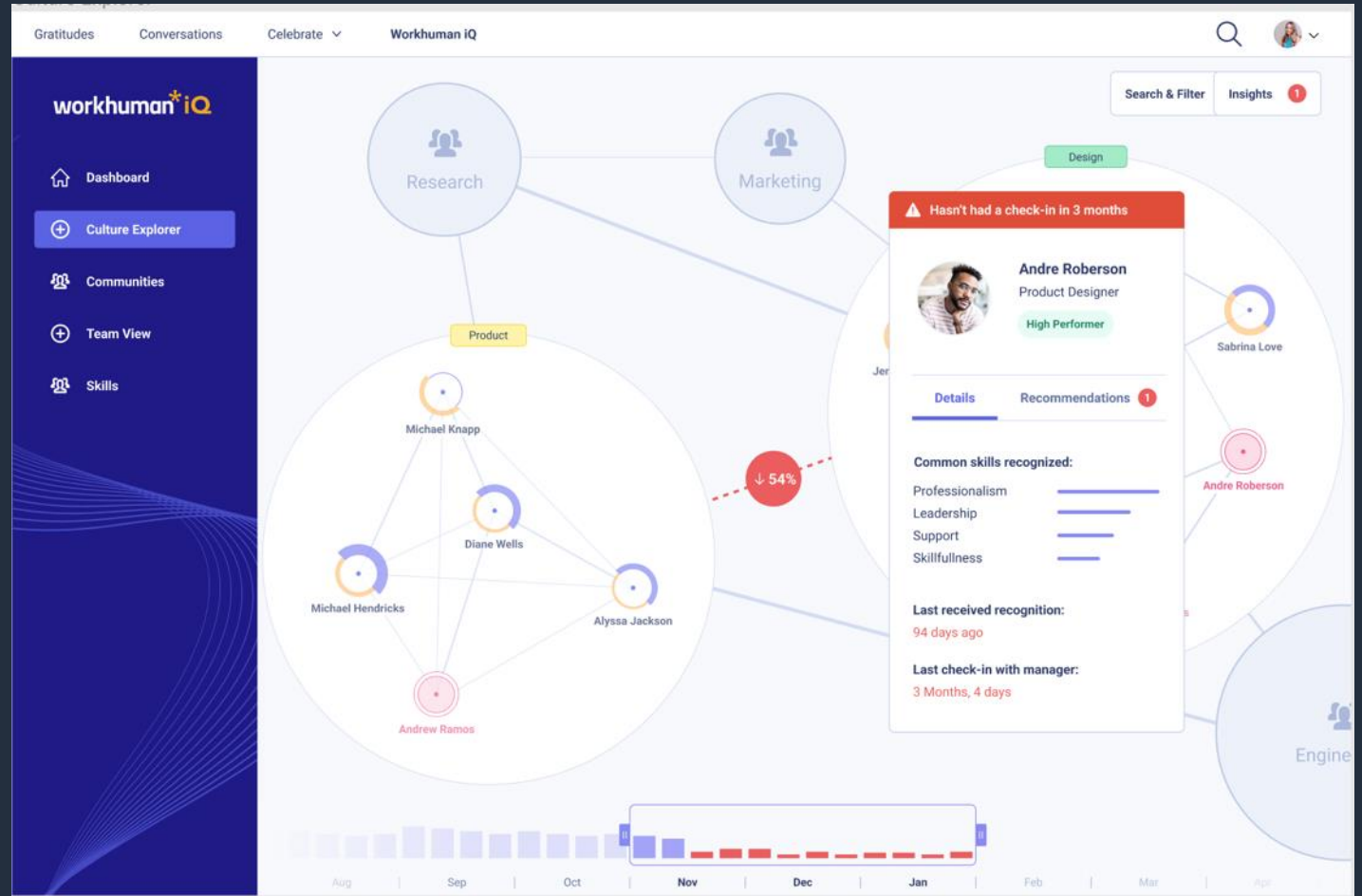
Collaboration patterns

Community detection

Graph traversal

Search

Non-functional requirements



# Graph Database comparison

## Arango DB

Property Graph

DBAAS in AWS

Native text search support

Time-series functionality

Native algorithm support

## Amazon Neptune

Property/RDF Graph

Native AWS support - NFRs, Serverless

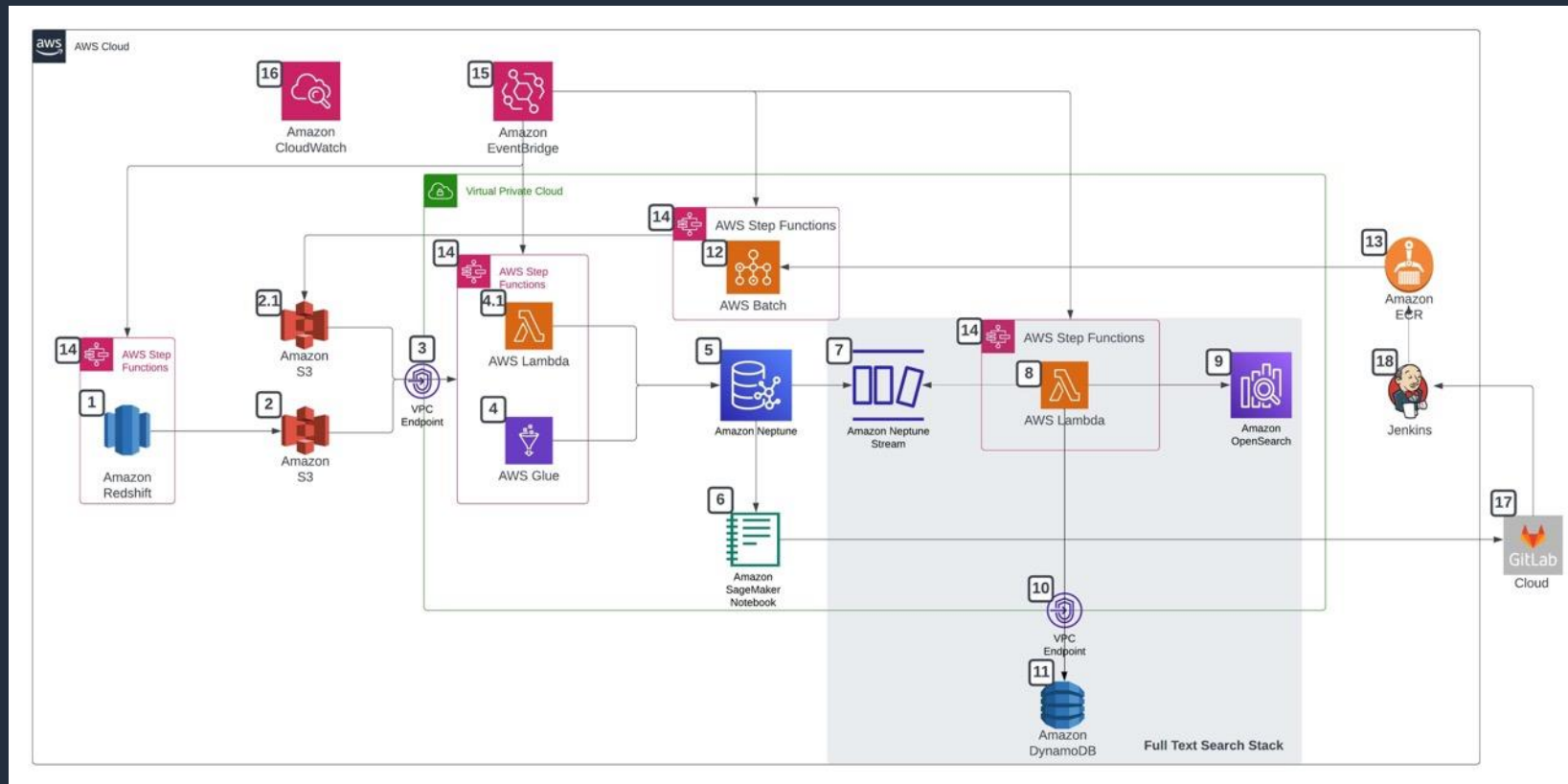
OpenSearch integration

Neptune Streams -> Amazon Timestream

AWS SDK for Pandas

# AWS to the rescue!

## FOUR DAY ENGAGEMENT



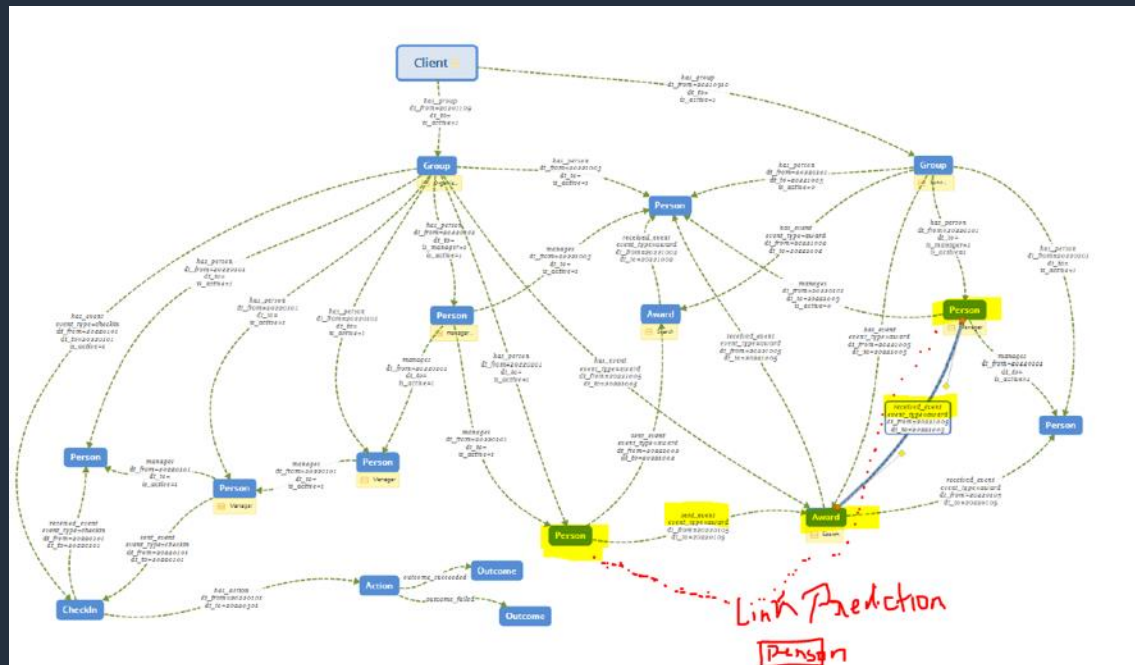
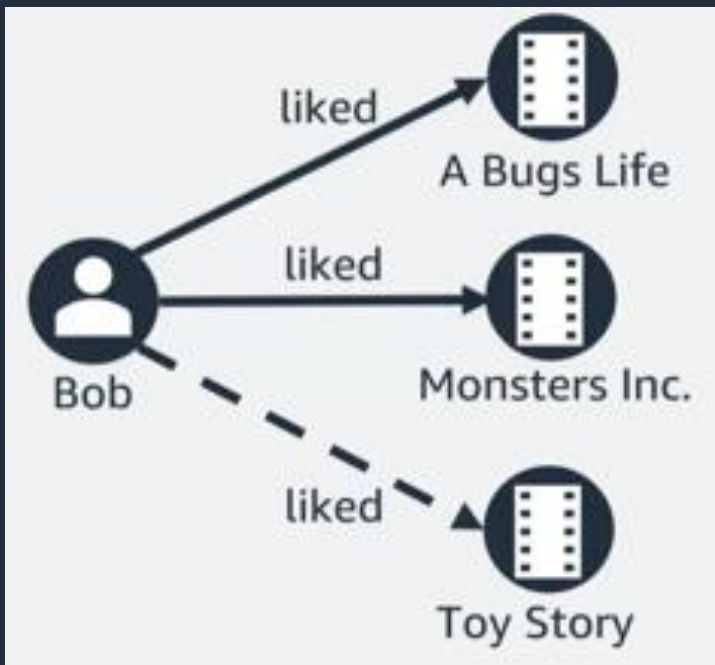
# What's next?



# Neptune Fraud Detection Use Case



# Amazon Neptune + AI (Graph Neural Network)



# Safe harbor statement

This presentation and other content we publish through any communication channels may contain forward-looking statements about Workhuman's business, operations, and financial results that involve risks, uncertainties, and assumptions. All statements other than those based on historical facts and results could be deemed forward-looking statements, including but not limited to statements regarding our products, services, new features, enhancements and upgrades to our existing products and services, plans for new products and services, statements regarding to the expected benefits, impact, or performance of our products and services, statements regarding our expected or forecasted financial and operating results, statements regarding our business strategy, market growth plans, and economic conditions, and any other statements based on our beliefs or predictions. Forward-looking statements involve inherent assumptions, uncertainties, risks, and changes in current and future circumstances, within as well as beyond our control. Our actual plans and operating and financial results could differ materially from the plans and results expressed or implied by the forward-looking statements that we may make from time to time; as such, the forward-looking statements may be proven incorrect and should not be relied upon.

The risks and uncertainties referred to above include, but are not limited to market and economic conditions, our financial and operating results, our strategic investment plans and priorities, our ability to maintain our service and information security standards to meet our customers' expectations, unanticipated expenses relating to any aspect of our business, products, and services, unanticipated costs relating to our ability to comply with applicable laws and regulations, and our competitors' activities. Unreleased products, services, features, enhancements, and upgrades discussed on this website or other content we publish through any communication channels are subject to change at Workhuman's sole discretion. All purchasing decisions relating to our products and services should be made based only upon those features and functions that are currently available.

Workhuman assumes no obligation for, and does not intend to update, any forward-looking statements, except as required by law.

